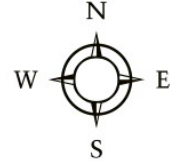


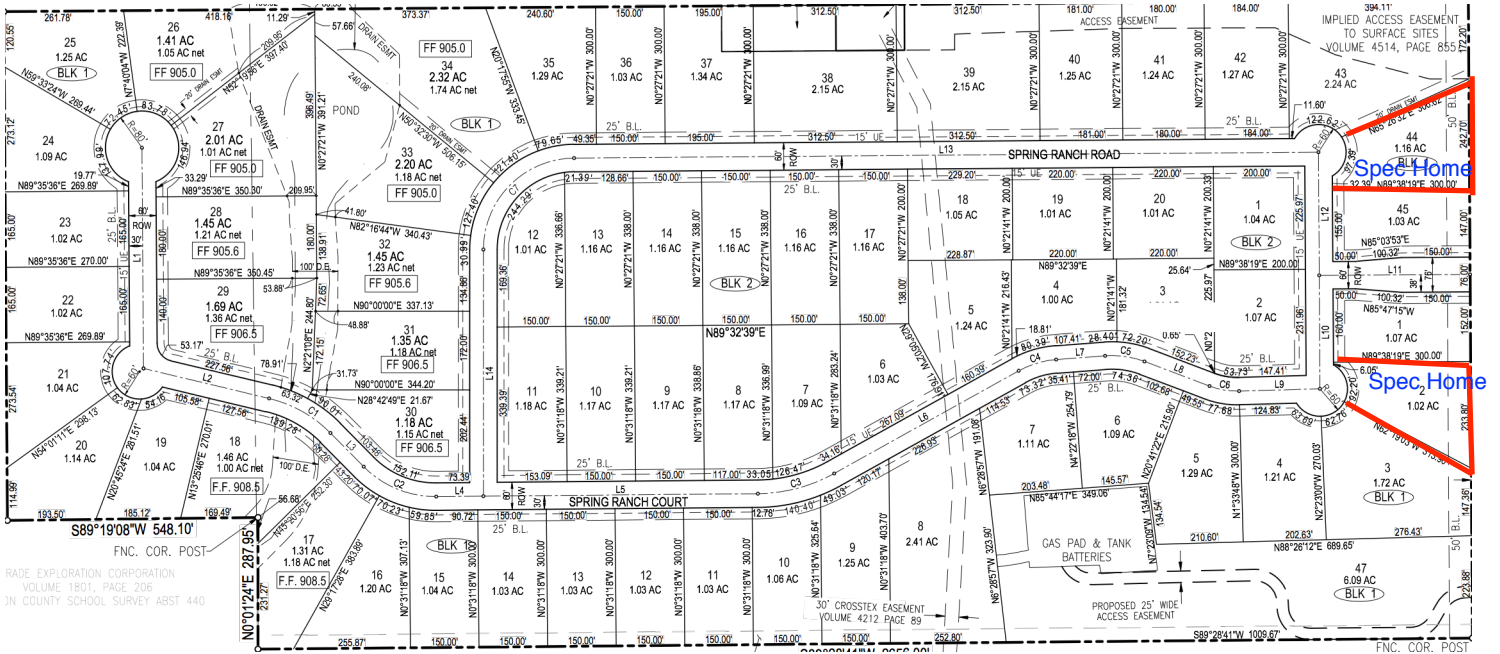


Royal Crest Custom Homes

Built like it's our own



Spring Ranch



- 1+ Acre Lots
- Godley ISD
- No City Taxes
- Beautiful Views
- Custom Home Community

RoyalCrestCustomHomes.com

For more information:

Caitlin Reagan

214-505-0296

caitlin@royalcrestcustomhomes.com

Directions to Spring Ranch from the RC Office:

Turn right onto 377 heading SW for 1.1 miles

Then turn left onto 1187 heading SE for 3.9 miles

Then turn right onto 2331 heading S for 4 miles

You will see the Spring Ranch sign on your right hand side.